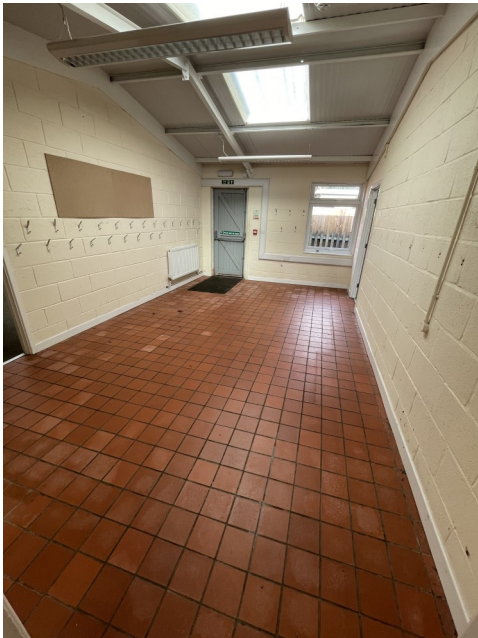


## Common Room



## Enterprise Room



## Opportunities to gain qualifications in:

- ◆ English
- ◆ Maths
- ◆ Employability
- ◆ PSD
- ◆ D of E
- ◆ Home cooking
- ◆ ICT

## Proposed Kitchen



## The Hive: Abington Woods

Parent Information



Exciting new offsite  
provision opening  
September 2021

## Who is it for?

The Hive provision is the education base for our 16-19 year old, formal pathway students (Darwin class)

## The main focus is:

### Skills for Life

The main emphasis on learning at the Hive will be developing life skills and preparing for adulthood. Application of these skills will be in real-life contexts.

- ◆ Community Access
- ◆ Home Management
- ◆ Cooking
- ◆ Shopping
- ◆ Travel training
- ◆ Digital Literacy
- ◆ Work skills
- ◆ Self-care
- ◆ Horticulture

## What will the curriculum look like?

- ◆ Independence and Skills for life
- ◆ Functional English
- ◆ Functional Maths
- ◆ Vocational Skills
- ◆ Personal and Social Development
- ◆ Relationship and Sex Education including Health Education
- ◆ Travel training
- ◆ Enrichment Opportunities



Classrooms

